

SHEET METAL MANUFACTURER

LOOK BOOK 2023

ABOUT US

Neel Kamal Metal Works is a leading metal fabrication and manufacturing company. We produce garden tools, fireside products, bareware, farm and poultry, bakeware, home decor, racks and storage, and other metal products with the utmost precision and reliability.

Legally established in 1990, Neel Kamal Metal Works has around 100 employees at present. The company is ISO CERTIFIED 9001: 2015 and manufactures high-quality metal products. Additionally, our ultra-modern production facility is audited by Quality Control Of India and SGS. It is divided into immense departments such as a production unit, a quality control unit, a purchasing unit, a research & development unit, a sales & marketing unit, and a warehouse unit.

Having systematically developed infrastructure facilities and a team of highly trained professionals, we deliver quality metal products to the UK, Europe, South America, and other parts of the globe.

TABLE OF CONTENTS

Category	Page No.
Manufacturing Process	01-03
Garden & Houseware	04-06
Fireside	07-09
Bakeware	10-12
Barware	13-16
Racks & Table	17-18
Homedecor	19-24

OUR MANUFACTURING PROCESSES

Neel Kamal Metal Works is committed to offering supremely durable and tremendously efficient metal products across the globe. Professionally designed with the use of the latest technology, these products are backed by a team of skilled professionals. In addition to their ease of use, fine finishing, sturdy construction, and long service life, our metal products are highly rated.

See how our manufacturing process works!

There are a number of categories of products we offer, including garden tools, fireside products, bakeware, bareware, home decor, racks & storage, etc. We go through a detailed manufacturing process to ensure that they are strong, corrosion-resistant, and offer a flawless finish. There is a degree of practice involved in each process, as well as the involvement of highly skilled professionals in each.

Keeping the research and development process at the core!

In the metal fabrication industry, an effective manufacturing project requires research and development (R&D). As a leading company in metal forming and manufacturing, Neel Kamal Metal Works has created a resource that elaborates on prototyping processes that are both time and cost-efficient. By conducting detailed research and development, we empower our team to design, test, and manufacture premium metal products with expertise. It is by far the most important step in our manufacturing processes that include:

- Idea generation
- Initial screening
- Concept development and testing
- Business and marketing strategy development
- Product development
- Test marketing
- Commercialization

Let's go ahead. Here's how we manufacture quality metal products :

Cutting

Among the most commonly used metal fabrication processes is cutting. Splitting a metal sheet into halves, thirds, or smaller sections is one of the steps involved in this process. A fresh cut of metal has been shaped into a particular shape. Various types of cutting equipment, such as lasers and plasma torches, are used in the cutting process.



Bending

In the process of fabricating metal, the next step is bending. As the metal must be folded in order to become less blunt, it's somewhat complicated. In order to perform this process, high-tech equipment is needed in facilities with specialized equipment. As a leading metal manufacturing company, we are proud to offer all of these facilities.



Welding

The welding process is one of the most popular methods of fabricating metal parts. In this process, our expert team joins two separate metal parts by deploying high-tech machinery. The parts used in our welding process are usually sheets, panels, bars, or other shapes.



Punching

It is an extensively used method in the metal manufacturing process. This process involves placing metal under a die and drilling through it with a drill. In order to complete this task, our team of skilled professionals utilizes high-tech machines.



Grinding

During the grinding process, the material is removed from the workpiece by means of a grinding wheel. We remove material from the workpiece by grinding wheels while creating a smooth surface texture. They are regularly lubricated to ensure smooth operation.



Rolling

In metal forming, rolling is the most crucial and widely used process. Through this process, metal parts are formed into semi-finished or finished shapes by moving between rollers rotating in opposite directions. Deforming metal into billets, blooms, sheets, slabs, plates, strips, etc. reduces its thickness. For the rolling process, we have established a separate department.





Casting

The process is widely accepted as the most effective method of mass-producing metal products. The molten metal is poured into a cooling mold, which sets the shape to a certain extent. Fabricating complex shapes with this flexible method is ideal for a wide range of metal fabrication applications. For this application, we mostly use steel, iron, and aluminum.



Double Seam

A double-seam canning process seals the can body and lid (also called the can end). Five layers of material are mechanically interlocked together - three for the lid and two for the body. To prevent contamination or degradation, a hermetic seal is created. The main three stages are involved in this process namely:

Compression | 1st Roller Operation
2nd Roller Operation

Our team of experts executes this process with precision!



Finishing

In the final stage of metal production, secondary forming gives the metal its final shape and properties.

It is done by:

Powder coating | Hot dipped galvanizing | Chrome
Electroplating | Antique color | Antique patina
Surface treatment



Packaging & Shipping

Our manufacturing process ends with packing the finished metal components. It protects the metal products throughout the entire logistics cycle and the shipping process. We offer:
Bulk shipping | Knockdown kits | Assembled Parts

We use proper packaging to prevent corrosion in sheet metal fabricated parts and other metal products.



Keeping quality as a top priority

We at Neel Kamal Metal Works pride ourselves on our expertise in many of the metal fabrication processes listed above. If you are interested in more information on metal product manufacturing, we have other guides available for your reference or you can stop by our unit to find potential sources of supply or to view specific product details.

GARDEN & HOUSEWARE

Make Your Gardening Easy!
Shop Our Premium Range Of Garden And
Houseware Products



GALVANISED INCINERATOR 90 LITRE

Product Code : G1000

Thickness : .45MM



GALVANISED BINS 90 LITRE

Product Code : G1001

Thickness : .45MM



GALVANISED BIN 60 LITRE

Product Code : G1002

Thickness : .45MM



GALVANISED INCINERATOR LITRE

Product Code : G1003

Thickness : .45MM



GALVANISED 12 LITRE

Product Code : G1004

Thickness : .40MM



GALVANISED BUCKET 10 LITRE

Product Code : G1005

Thickness : .40MM

**GALVANISED MOP
BUCKET 13 LITRE**

Product Code : G1006

Thickness: .45MM



**GALVANISED WATERING
3GALLON**

Product Code : G1007

Thickness : .45MM



**GALVANISED 2GALLON
WATERING CANS**

Product Code : G1010

Thickness : .45MM



**V-LIPPED HOT
DIPPED TAR CAN**

Product Code : G1008

Thickness : .45MM



**GALVANISED
TAR POURING
CANS HDG**

Product Code : G1009

Weight : 2.3kg



**10 LITRE GALVANISED
ROLLER BUCKET**

Product Code : G1011

Thickness : .45MM



FIRESIDE

Higher Value, Premium Fireside Products
Offers efficiency, great style, and durability



COAL HOD BLACK

Product Code : F1000

Weight : 1.2 kg

Dimension : 58.5x25 cm

Thickness : .45MM



WATERLOO BLACK

Product Code : F1004

Weight : 1.2 kg

Dimension : 38 X 33 X 31.5 X 22.8 cm

Thickness : .45MM



COAL HOD BLACK WITH GOLDEN HANDLE

Product Code : F1001

Weight : 1 kg

Dimension : 44x23 cm

Thickness : .45MM



GALVANISED

Product Code : F1005

Weight : 1.4 kg

Dimension : 38 X 33 X 31.5 X 22.8 cm

Thickness : .45MM



COAL HOD BRONZE

Product Code : F1002

Weight : 1.1 kg

Dimension : 54x23 cm

Thickness : .45MM



GALVANISED KINDLING BUCKET

Product Code : F1006

Weight : 1.2 kg

Dimension : 12x12.6 cm

Thickness : .45MM



GALVANISED FINISH

Product Code : F1003

Weight : 1.2 kg

Dimension : 58.5x25 cm

Thickness : .45MM



ASH BUCKET GREY

(OTHER COLOR OPTIONS AVAILABLE)

Product Code : F1007

Weight : 1.3 kg

Dimension : 12x12.6 cm

Thickness : .45MM



BLACK ASH CAN & CAPTURE LID

Product Code : F1008

Thickness : .45MM



BLACK CROMWELL BUCKET

Product Code : F1012

Thickness : .60MM

Weight : .2Kg

Dimension : 11X 14.5



ASH BUCKET MINI

Product Code : F1009

Thickness : .45MM



FIRE COMPANION SET

Product Code : F1013

Weight : 2.3Kg

Dimension : 21 inch



COAL HOD BLACK WITH GOLDEN HANDLE

Product Code : F1014

Weight : 2.3Kg

Dimension : 21 inch

Product Code : F1014



ASH BUCKET WITH SHOVEL

Product Code : F1010

Thickness : .45MM



GALVANIZED ASH CARRIER 3 SIZES

Product Code : F1015

Thickness : .45mm

Weight : 2.25 kg | 2.3 kg | 2.6 kg

Dimension : 12.5 X 4.5 X 12 inch
16.5 X 4.5 X 15 inch
16.5 X 4.5 X 19 inch



WATERLOO BLACK WITH GOLDEN HANDLE

Product Code : F1011

Thickness : .45MM



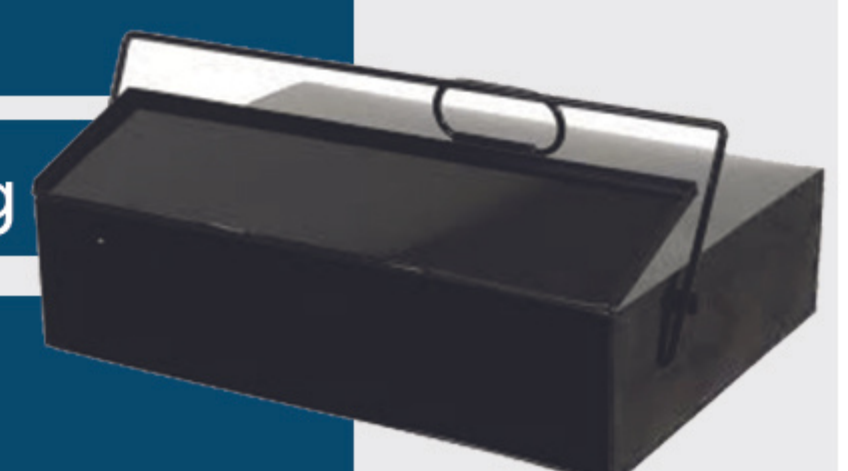
GALVANIZED ASH CARRIER

Product Code : F1016

Thickness : .45mm

Weight : 2.25 kg | 2.3 kg | 2.6 kg

Dimension : 12.5 X 4.5 X 12 inch
16.5 X 4.5 X 15 inch
16.5 X 4.5 X 19 inch



BAKEWARE

Enjoy the art of baking with our premium bakeware products.

Have a look at the sturdy designs!



BAKEWARE

CAKE MOULD WITH 7 DESIGN

HEART | SQUARE
ROUND | HEXAGON
RECTANGULAR
FLOWER | PETAL



Product Code : B1000

TART MOULD

Product Code : B1004



ROUND CAKE MOULD

SIZES FROM
6.5" TO 8.5 "INCHES

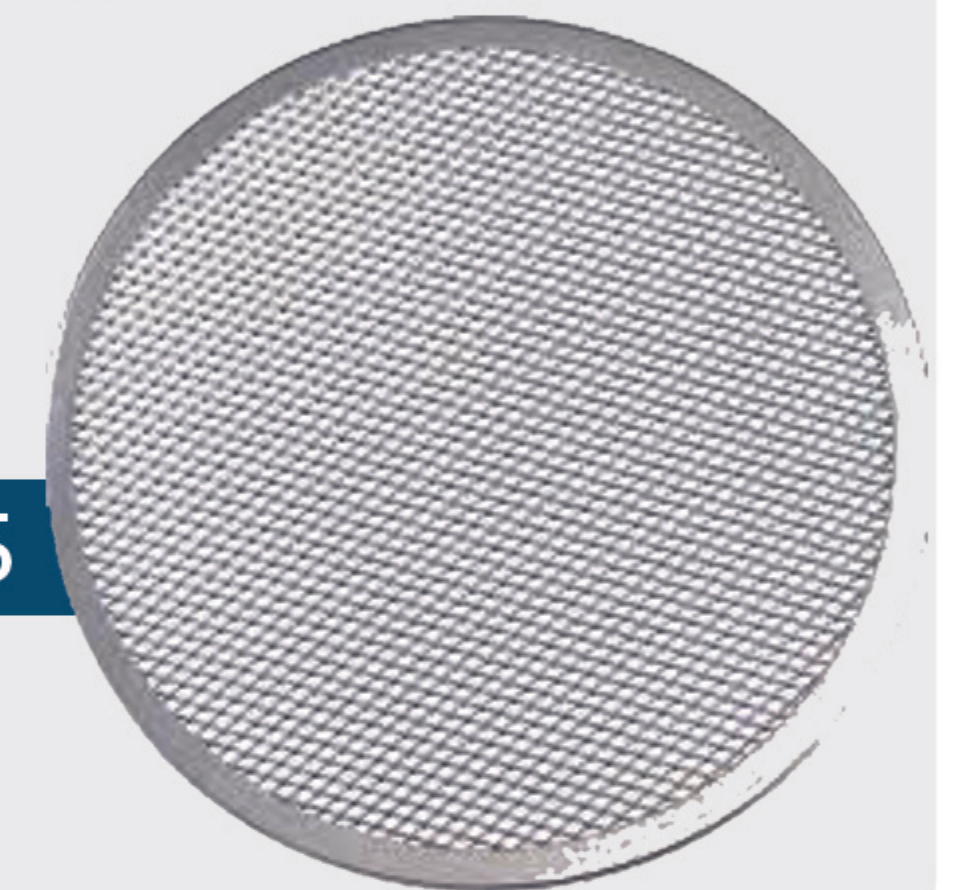


Product Code : B1001

ALUMINIUM PIZZA SCREEN SIZES:

6 TO 13 INCHES

Product Code : B1005



JELLY MOULD WITH 2 SHAPES:

BOWL - TURKEY



Product Code : B1002

ALUMINIUM DOLL MOULD

Product Code : B1006



RING MOULD

2 TO 8 INCHES

Product Code : B1003



ALUMINIUM BISCUIT CUTTER

Product Code : B1007



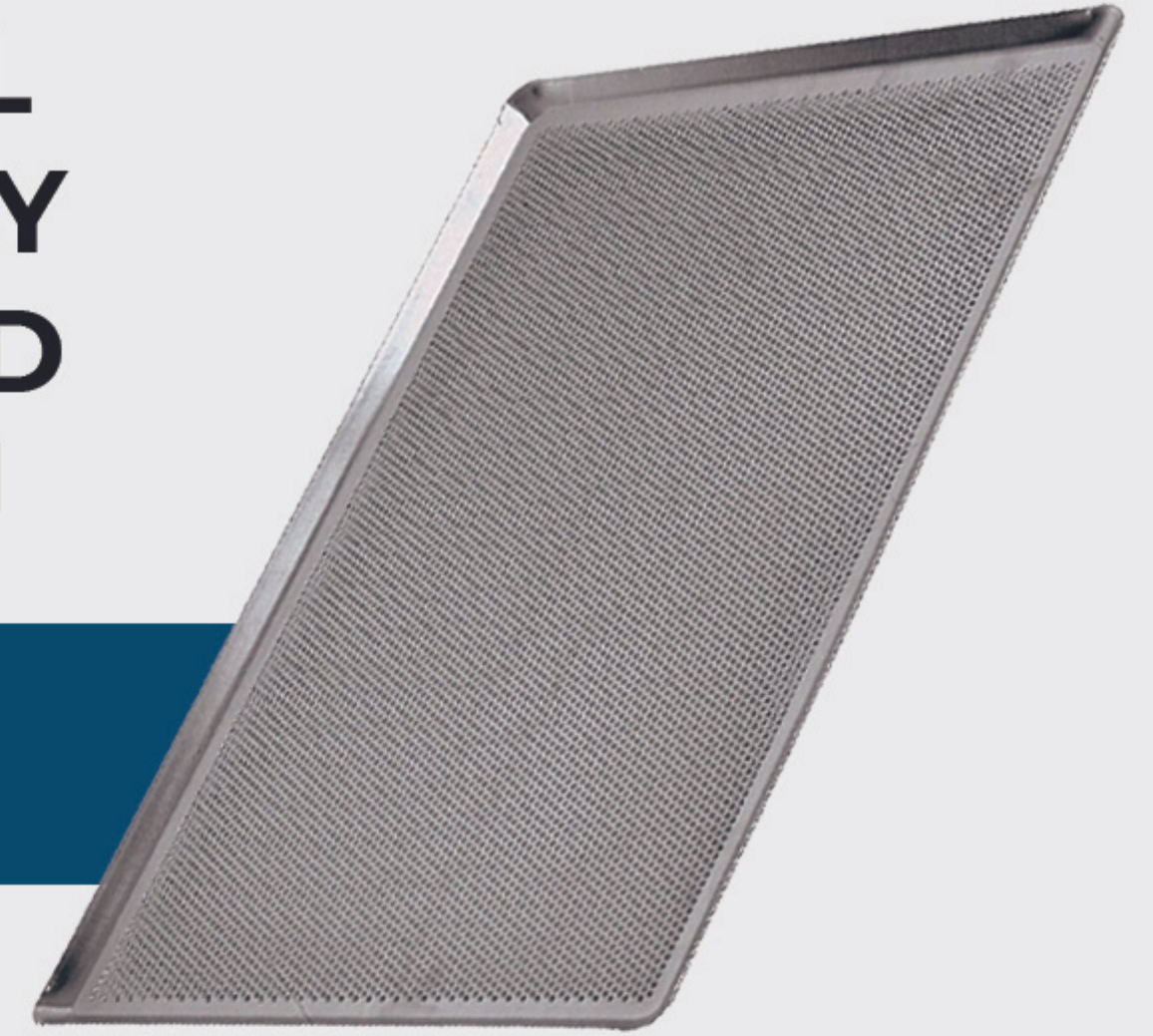
STEEL BISCUIT CUTTER



Product Code : B1008

ALLOY STEEL BAKING TRAY PERFORATED

16 X 24 X 1 INCH



Product Code : B1012

ALUMINIUM MUFFIN MOULD ALUMINIUM



Product Code : B1009

ALLOY STEEL BUN TRAY

15 INDENTS



Product Code : B1013

ALUMINIUM LOAF PAN



Product Code : B1010

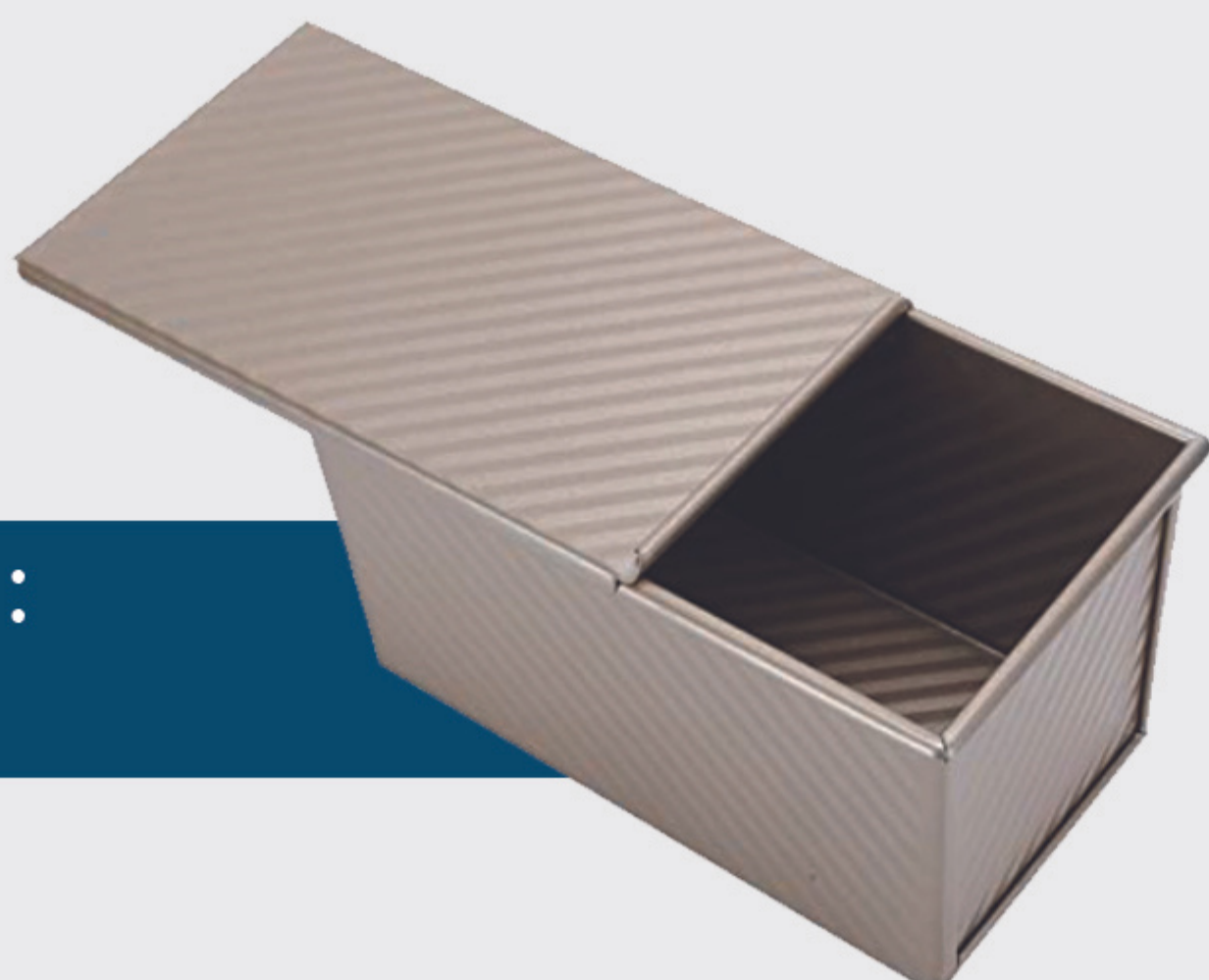
STEEL CHOCOLATE SCRAPER TWO SIZES

3 INCH AND 4 INCH



Product Code : B1014

NON STICK LOAF PAN WITH LID



Product Code : B1011

PIZZA TURNER

3 SIZES- 6,8 AND 10 INCHES



Product Code : B1015

BARWARE

A perfect addition to your modern kitchen
Offering a wide variety of Bareware products

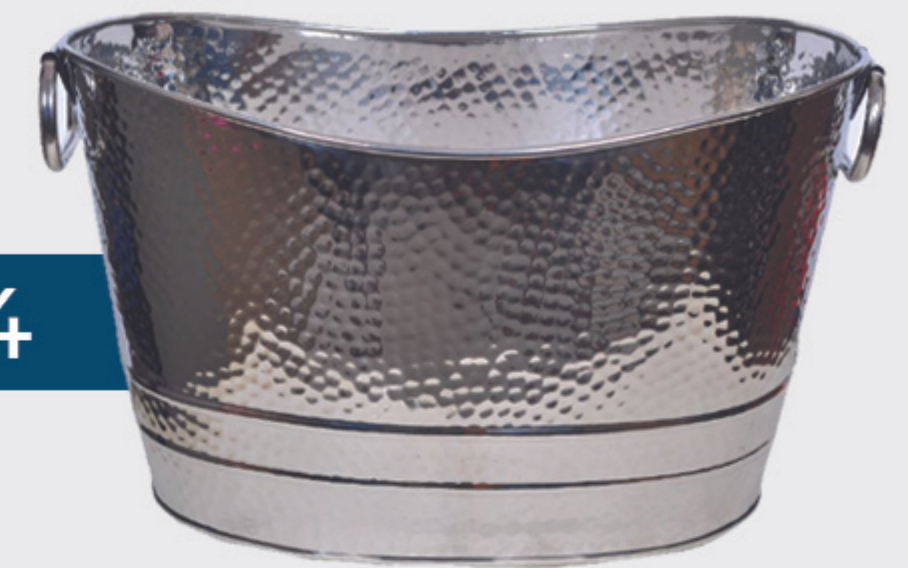


**STAINLESS STEEL
HAMMERED
PARTY BUCKET
(9INCH)**



Product Code : K1000

**STAINLESS STEEL
HAMMERED PARTY TUB
(12INCHS)**



Product Code : K1004

**STAINLESS STEEL
HAMMERED PARTY TUBS
(15 INCH)**



Product Code : K1001

**GALVANISED BEVERAGES
TUB WITH JUTE HANDLE
(14 INCH)**



Product Code : K1005

**STAINLESS STEEL
HAMMERED PARTY TUB
(14INCH)**



Product Code : K1002

**STAINLESS STEEL HAMMERED
COPPER FINISH PARTY TUB
(15INCH)**



Product Code : K1006

**STAINLESS STEEL
ROUND PARTY TUB
(16 INCH)**



Product Code : K1003

**GALVANISED COPPER PLATING
BEVERAGES TUB
(14 INCH)**

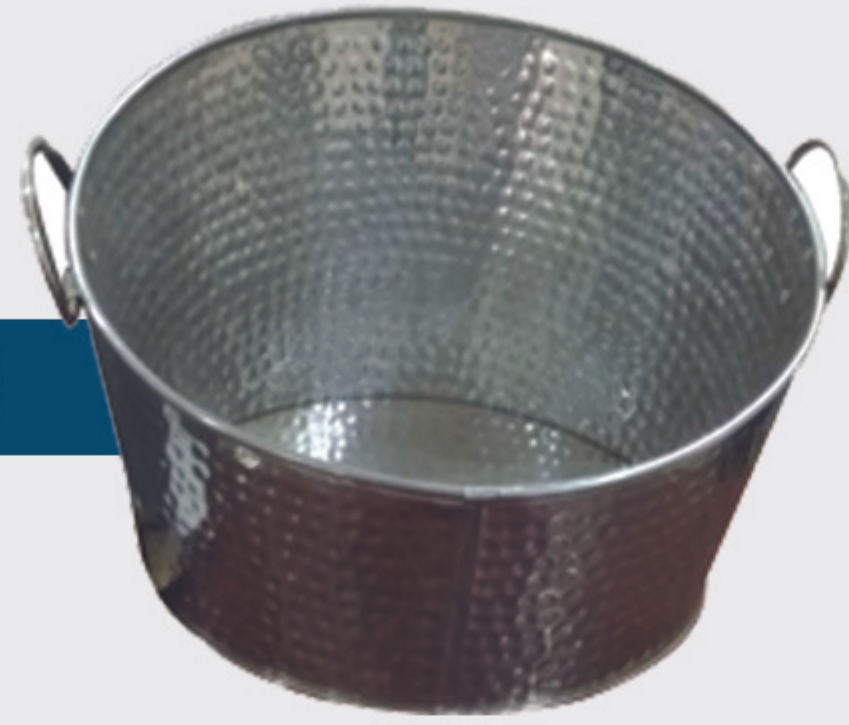


Product Code : K1007

BARWARE

**STAINLESS STEEL TAPERED
HAMMERED PARTY TUB**
(12 INCH)

Product Code : K1008



**GALVANISED ANITUQE
BEVERAGE TUB**
(10 INCH)

Product Code : K1012



**GALVANSIED HAMMERED
BEVERAGES TUBS**
(10INCHES)

Product Code : K1009



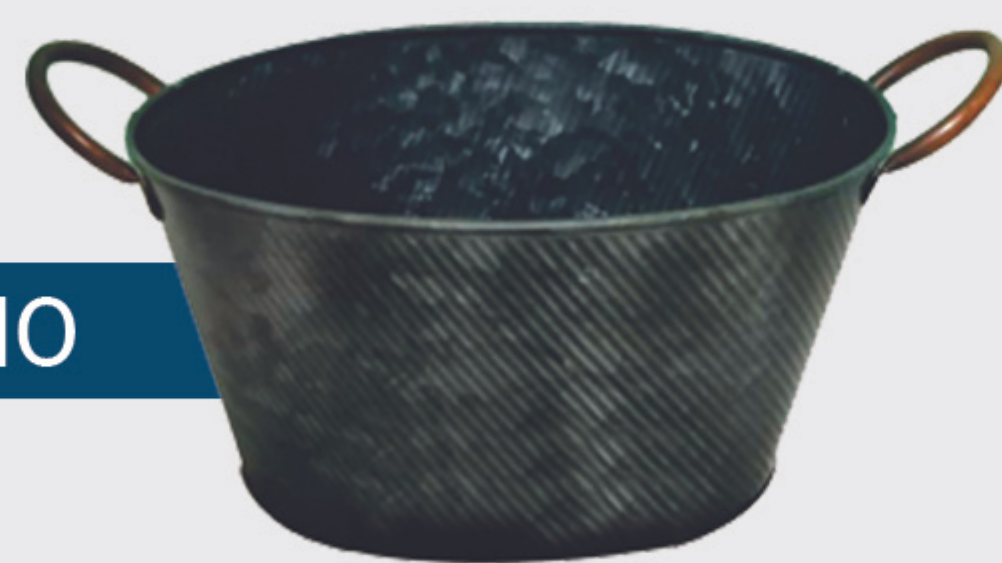
**GALVANISED PORTABLE
BARBECUE**
(10X12) INCH

Product Code : K1013



**GALVANISED BEVERAGES
TUB WITH ANITIQUE FINISH**
(12 INCH)

Product Code : K1010



**GALVANISED FINISH
TOOLS CADDY**
(11 X7) INCH

Product Code : K1014



**GALVANISED ANITQUE
BEVERAGES
BUCKET** (11 INCH)

Product Code : K1011



**GALVANISED BEVERAGE
TUB ANTIQUE FINISH**
(14INCH)

Product Code : K1015



**GALVANISED
TOOLS CADDY**
(10 X7) INCH



Product Code : K1016

**950 ML COPPER
BOTTLE WITH
HAMMER FINISH**



Product Code : K1020

**16 OZ
COPPER MUG**



Product Code : K1017

**750 ML COPPER
BOTTLE WITH
ETCHING**



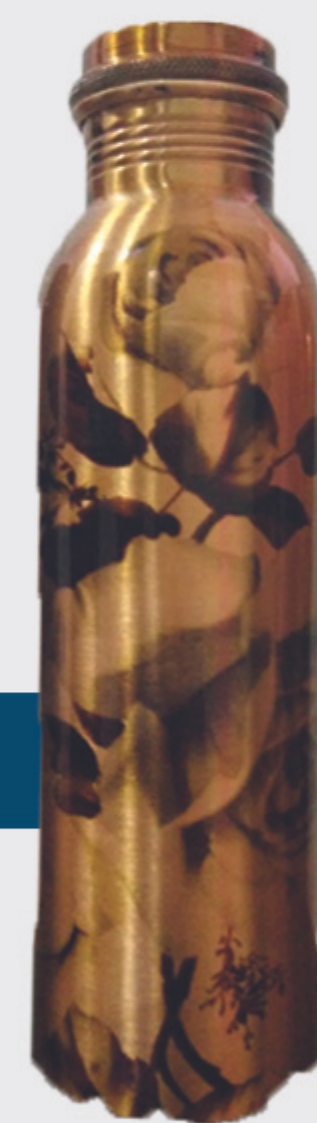
Product Code : K1021

**16 OZ
COPPER MUG**



Product Code : K1018

**750 ML COPPER
BOTTLE WITH
PRINTED**



Product Code : K1022

**950 ML COPPER
BOTTLE WITH
PRINTING**



Product Code : K1019

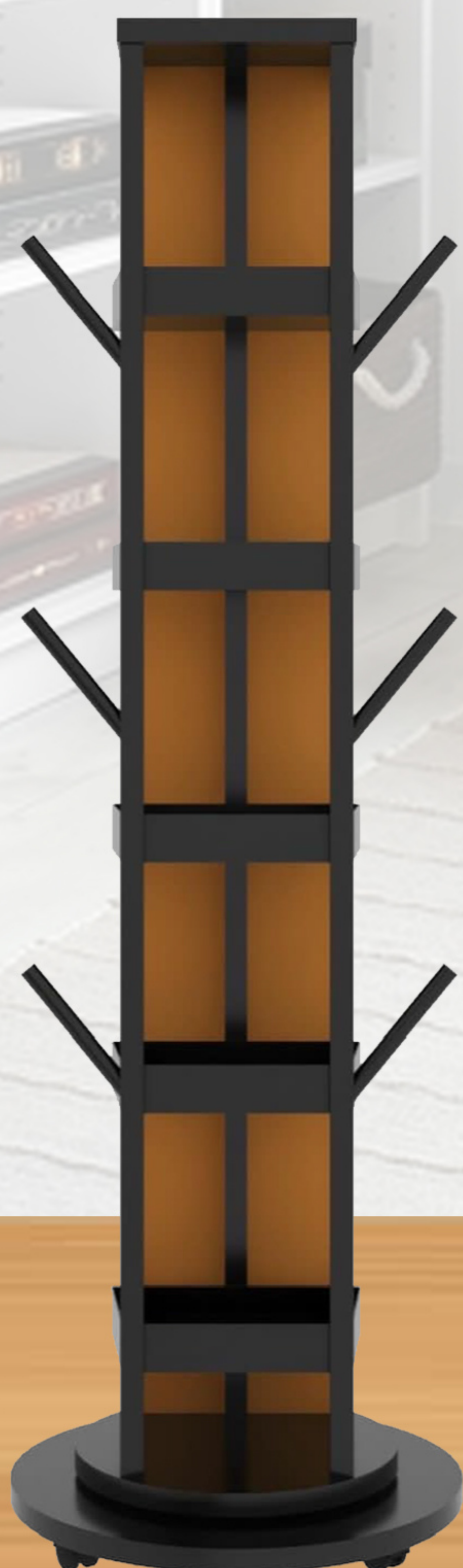
**950 ML COPPER
BOTTLE WITH
ETCHING AND
ANTIQUES**



Product Code : K1023

RACKS & TABLE

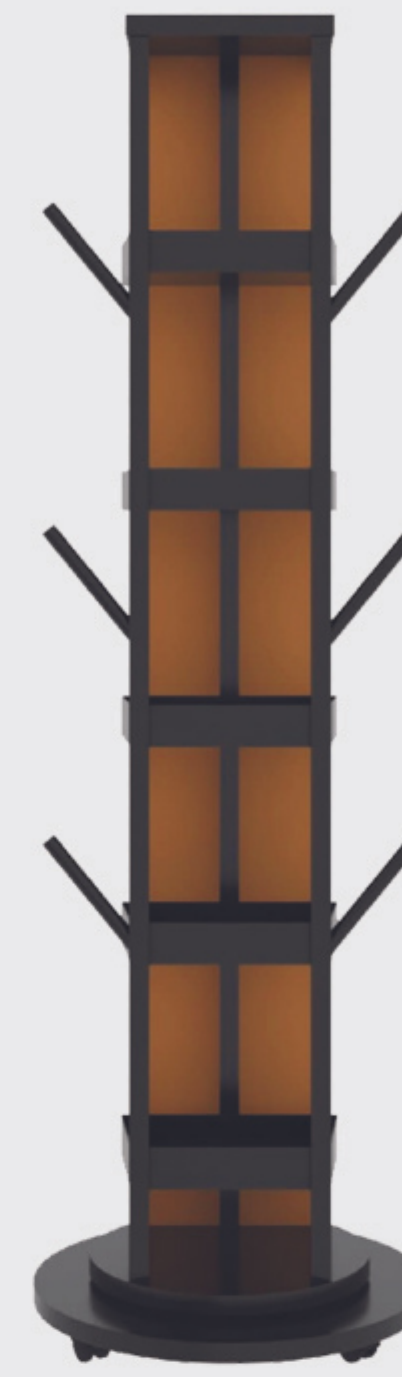
Organize your wardrobe smartly
Utilize your space effectively with these racks
and tables



DRESSING MIRROR MOVABLE

45 X 49 X 165 CM

Product Code : R1000



STANDING RACK WITH 360 MIRROR IN BACK

Product Code : R1003

Dimension : .26.67 X 26.67 X 157 CM

ALUMINIUM EASEL STAND

152 CM HEIGHT

Product Code : R1001



LAPTOP TABLE MOVABLE

53 X 38 X 76.2 CM

Product Code : R1002



IRON MOVABLE CORNER WITH MIRROR

Product Code : R1004

Dimension : 40 X 40 X 127 CM

HOMEDECOR

Style your home in the most intricate way!
Get the best home decor



**HANDICRAFT METAL
WALL ART - MIRROR**
32X32 INCHES DIA



Product Code : H1000

**METAL WALL ART
RUSTIC STAR**
36 X 36 INCHES



Product Code :
H1004

**HANDICRAFT METAL
WALL ART MIRROR**
36X36 INCHES DIA



Product Code :
H1001

**RUSTIC METAL
WALL ART**
36 X 36 INCHES



Product Code :
H1005

**METAL WALL ART
METAL BUSH WITH LEAVES**
70 X 70 CM



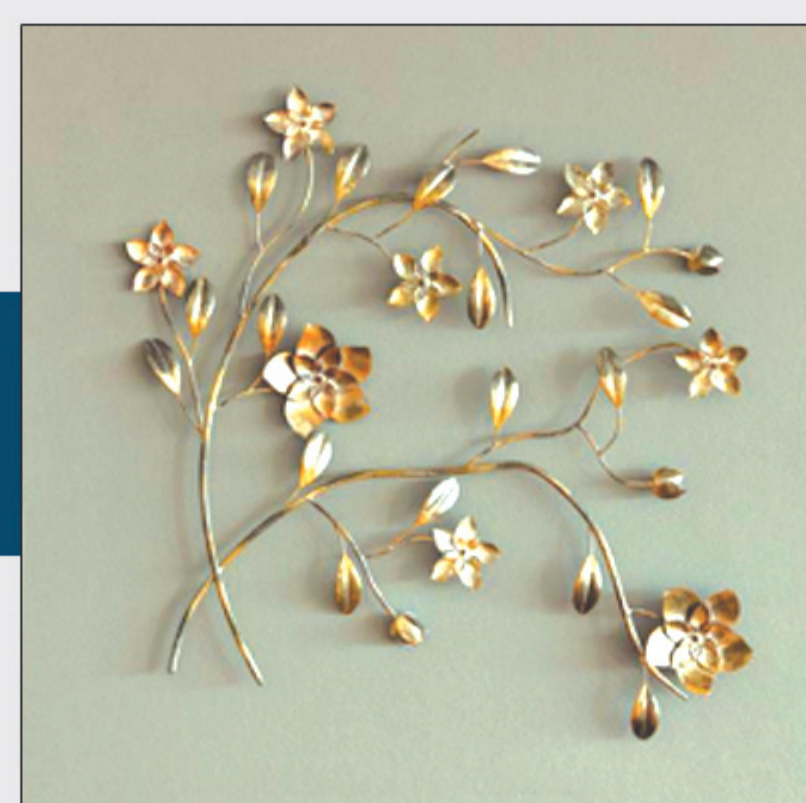
Product Code :
H1002

RUSTIC STAR
2" TO 18 INCHES



Product Code :
H1006

**MEAT WALL ART
LEAVES GOLD PLATING**
60CM X65 CM



Product Code :
H1003

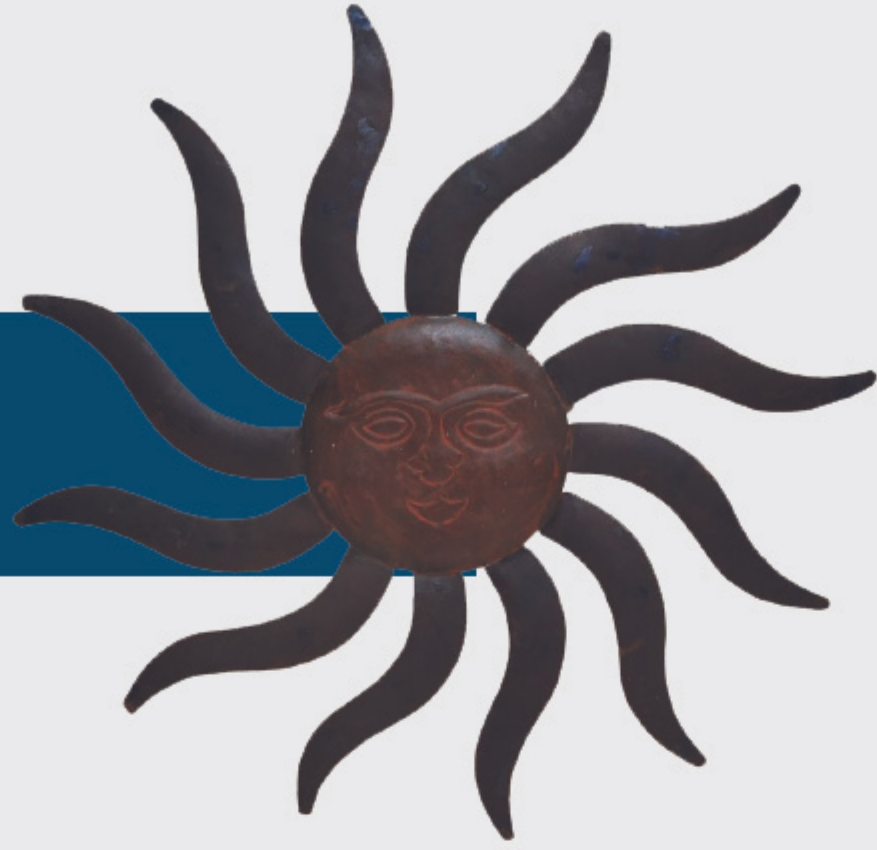
RUSTIC STAR
2" TO 18 INCHES



Product Code :
H1007

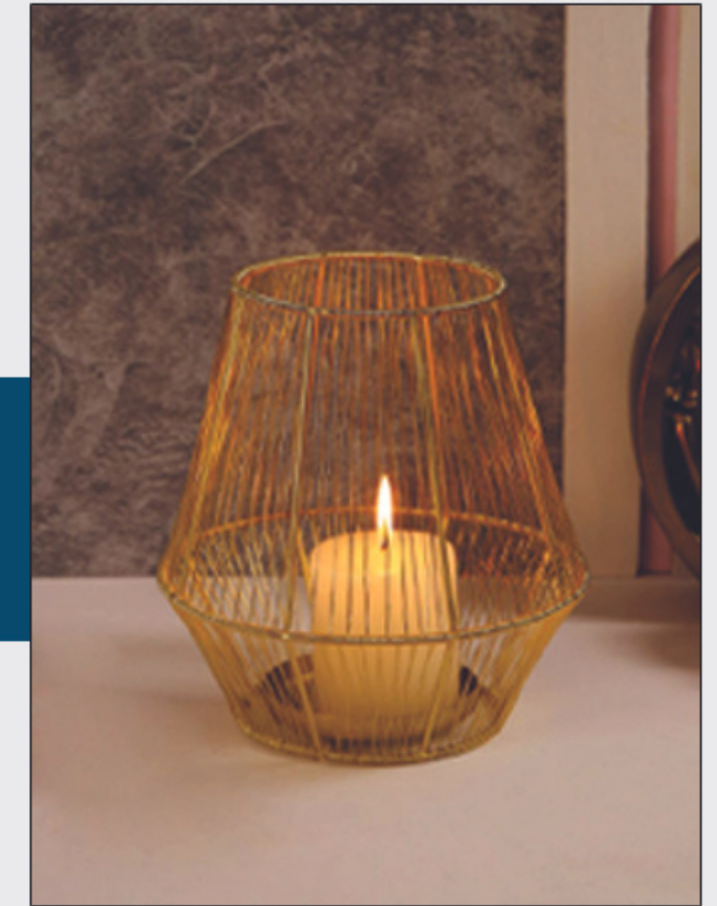
RUSTIC METAL SUN ART 36 X 36 INCHES

Product Code :
H1008



OVAL T-LIGHT CANDLE STAND (GOLD PLATING)

Product Code :
H1012



HANGING LANTERN 40CM

Product Code :
H1009



T-LITE CRANE CANDLE HOLDER 10*08*30 INCHES 09*05*23 INCHES

Product Code :
H1013



HANGING LANTERN (H) 50CM- 40-CM -30CM

Product Code :
H1010



GALVANISED PRINTED BASKET 13*11*14

Product Code :
H1014



HANGING LANTERN (H) 40 CM X 30 CM

Product Code :
H1011



GALVANISED PRINTED BASKET 13*11*14

Product Code :
H1015



GALVANISED PRINTED BASKET

13*11*14

Product Code :
H1016



GALVANISED DECORATIVE ANTIQUE FINSH TUB

17*10*8 INCHES

Product Code :
H1020



GALVANISED PRINTED BASKET

13*11*14

Product Code :
H1017



GALVANISED DECORATIVE PRINTED BUCKET

DIA 10 *HEIGHT 11.5 INCHES

Product Code : H1021



GALVANISED PRINTED BASKET

13*11*14

Product Code :
H1018



GALVANISED ANTIQUE FINISH DECORATIVE BASKET WITH LID

DIA 10.3*11.5 HEIGHT

Product Code : H1022



GALVANISED DECORATIVE ANTIQUE FINSH TUB

17*10*8 INCHES

Product Code :
H1019



ANTIQUÉ FINISH WATERING CANS PLANTER

DIA 8.5*HEIGHT 12 INCHES

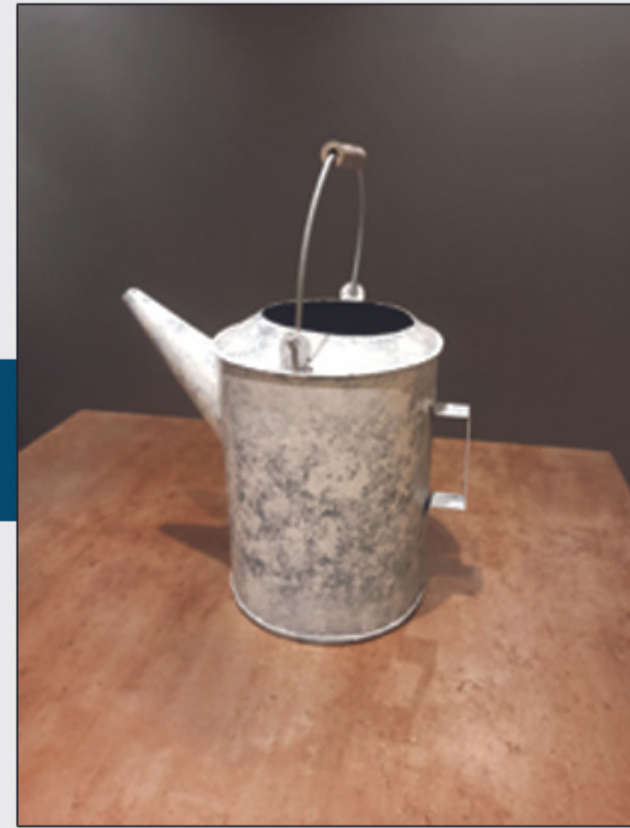
Product Code : H1023



ANTIQUE FINISH WATERING CANS PLANTER

DIA 8.5* 12 INCHES

Product Code : H1024



GALVANISED ANTIQUE FINISH BUCKET

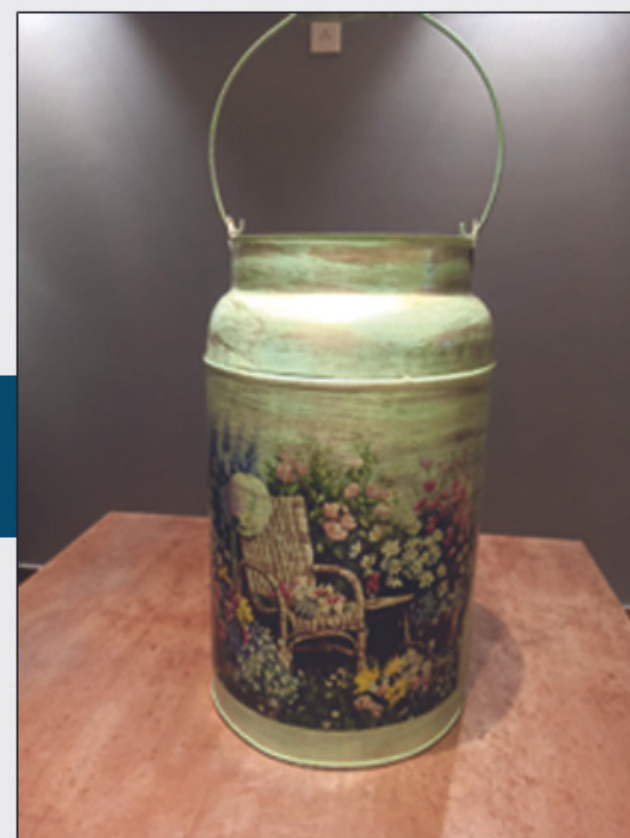
Product Code : H1028



ANTIQUE FINISH MILK CAN PLANTER

DIA 12 *20 INCHES

Product Code : H1025



GALVANISED HANGING PLANTER

Product Code : H1029



ANTIQUE FINISH MILK CAN PLANTER

DIA 12 *20 INCHES

Product Code : H1026



GALVANISED OLIVE BUCKET

Product Code : H1030



GALVANISED BASKET

THREE SIZES 12*12*15 INCHES

Product Code : H1027



METAL VASES

Product Code : H1030



METAL VASES

Product Code :
H1032



IRON COFFE TABLE WITH MIRROR ON TOP

62*62*46 CM

Product Code :
H1036



GOLDEN & BLACK METAL PLANTER SET OF TWO

Product Code :
H1033



IRON COFFE TABLE WITH MIRROR ON TOP

62*62*46 CM

Product Code :
H1037



IRON COFFE TABLE WITH MIRROR ON TOP

40*40*46 CM

Product Code :
H1034



GALVANISED META BOX THREE SIZES 12*12* 8

Product Code :
H1038



STEEL COFFEE TABLE WITH MIRROR

40*40*46CM

Product Code :
H1035





NEEL KAMAL METAL WORKS
E-11 , SECTOR -A5/6 , TRONICA CITY INDUSTRIAL
AREA GHAZIABAD UTTAR PRADESH, 201102

PHONE : +91 8447294512 , 9810800589
EMAIL - suhail1@neelkamalmetalworks.com